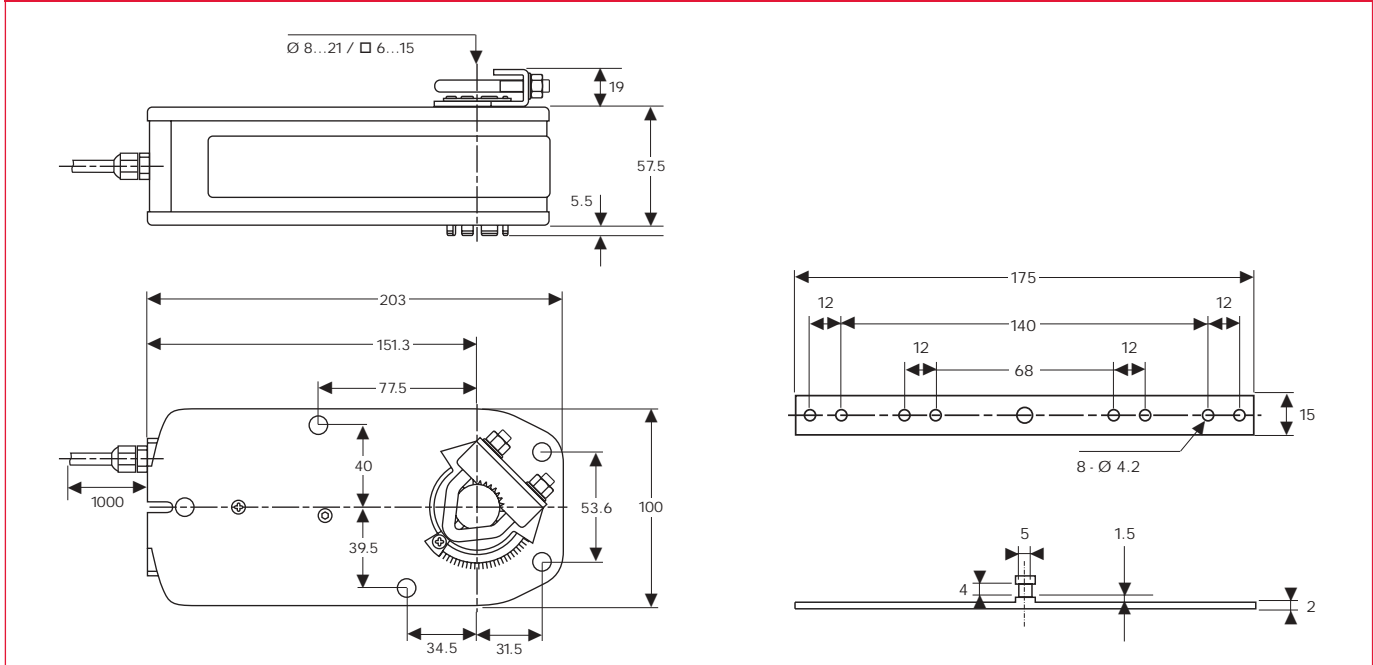


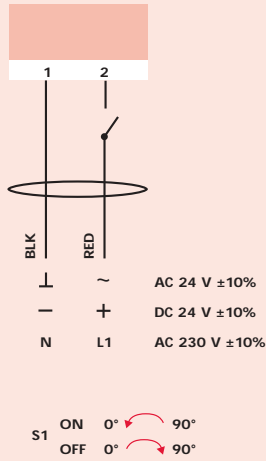
Actuator Dimensions (mm)



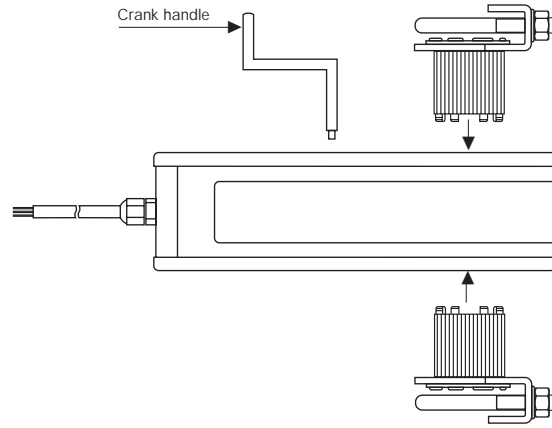
Technical Specification

	NAFA1-08(S)	NAFA2-08(S)
Torque	8 Nm	8 Nm
Damper Size	1.5 m ²	1.5 m ²
Power Supply	AC/DC 24 V	AC 230 V
Frequency	50-60 Hz	50-60 Hz
Power Consumption		
– Operating	7.0 W	8.0 W
– At the end stops	2.0 W	5.5 W
For wire sizing	0 VA	0 VA
Auxiliary switch rating	3(1.5) A /AC 250 V	3(1.5) A /AC 250 V
Protection class	II	II
Control Signals	2 point On/Off	2 point On/Off
Angle of Rotation	-5...+90° (mechanical)	-5...+90° (mechanical)
Angle Limiting	Mechanical end stops	Mechanical end stops
Weight approx.	2.2 kg	2.3 kg
Life Cycle	60,000 rotation	60,000 rotation
Sound Level	Max. 45 dB(A)	Max. 45 dB(A)
IP Protection	IP54	IP54
Ambient Temperature	-20°...+50°C / IEC 721-3-3	-20°...+50°C / IEC 721-3-3
Inventory Temperature	-30°...+60°C / IEC 721-3-2	-30°...+60°C / IEC 721-3-2
Ambient Humidity	5...95% rH non condensing	5...95% rH non condensing
Maintenance	maintenance free	maintenance free
Impact	Typ I / EN 60730-1	Typ I / EN 60730-1
Standardize	89/336/CE	89/336/CE

Wiring diagram NAFA...08

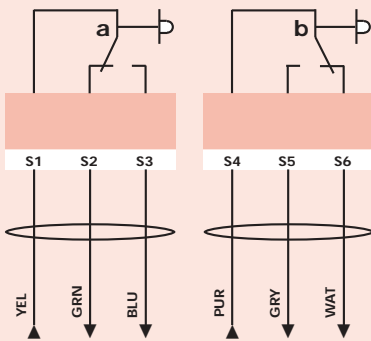


Changing direction of rotation



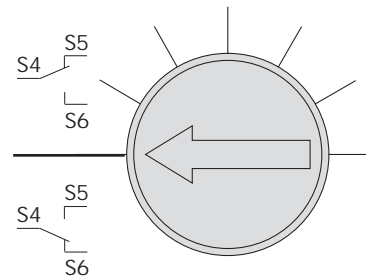
⚠ 24VAC/DC: Connect via safety isolating transformer.
230 VAC: To isolate from the main power supply, the system must incorporate a device which disconnects the phase conductors (with at least a 3 mm contact gap).

Auxiliary switches (S)



Auxiliary switch adjustment NAFA...08(S) Switch a Factory set at 5°

Switch b adjustable 40°...90°

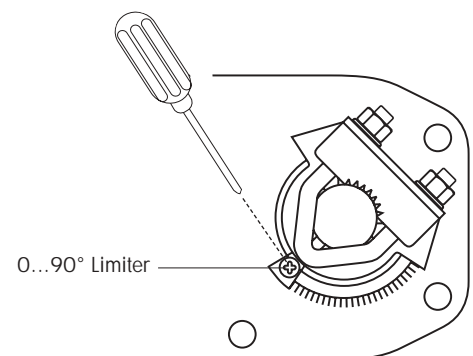


Built-in Microswitch Adjustment (for NAFA...).
Move the screw of the microswitch.

Angle-of-rotation limiting

Mechanical Limited Adjustment

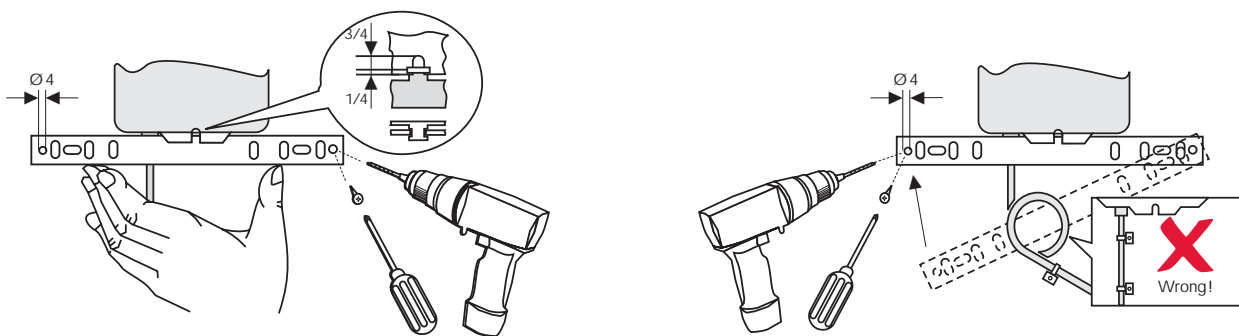
1. Loosen screw of the mechanical limited.
2. Move the limited to the appropriate position.
3. Tighten on the screw.



OEM – customized version

TELIMA/NENUTEC offer you as well actuators in a customized version on request in your own brandname. Please contact us for further more detail information.

Installation / Mounting



Important Remark

The NENUTEC NAFA...(S) spring return actuator series can be equipped with a variety of NENUTEC products, Characterized two-three-way Ball Valves the NVCB... series.

Consult NENUTEC representatives or factory for the specific requirements and material selection for your intended application.

Headquarter:



TELIMA AG

Schachenstrasse 80
CH-8645 Jona / Switzerland
Phone +41 55 224 40 60
Fax +41 55 224 40 69
e-mail: info@telima.ch
www.nenutec.com

For Asia / Pacific:

NENUTEC®

NENUTEC ASIA PACIFIC
32 Upper Serangoon View
15-42 Singapore 534 209
Phone +65 6489 1815
Fax +65 6489 1816
e-mail: nenutec@singnet.com.sg