



- NENUTEC **SAFA...08S (T)** 8 Nm Spring Return damper actuator Series are designed specifically for Fire and Smoke application.
- NENUTEC high quality damper actuators are developed for use with fire and smoke damper. The actuator motorized the damper or other devices when power on and spring back to it original position when power is cut off or trip by the thermal sensor.

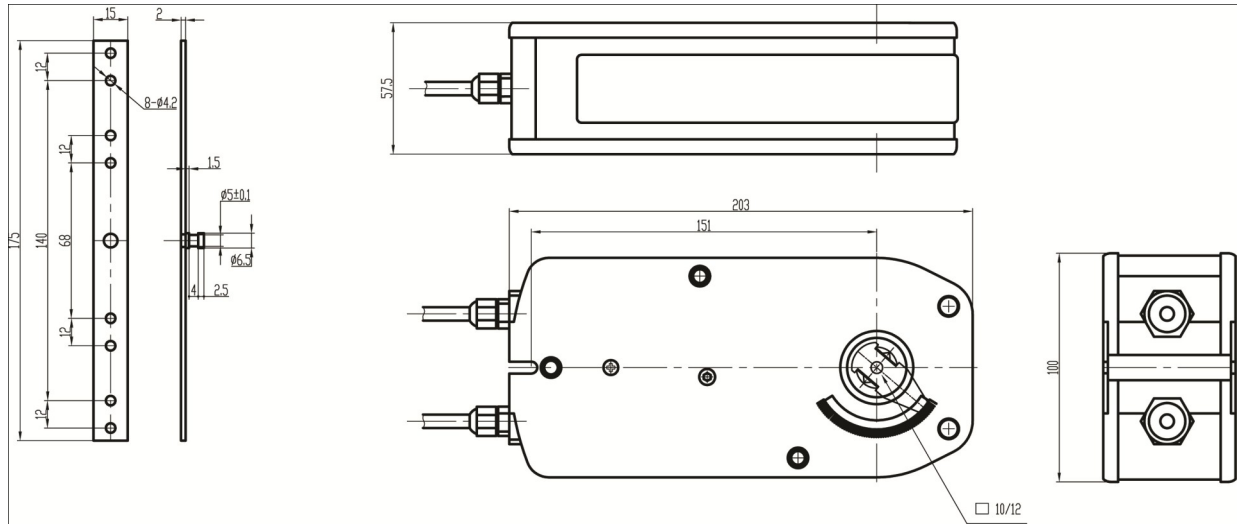
Product Features

- 2 points on/off control
- Damper Size up to 1.5 m²
- Voltage AC/DC 24V and AC 230V available
- Shaft dimension Form Fit 12mm square
- Adapter supplied for Form Fit 8 or 10 mm square
- Manual Over ride by crank handle when required
- Anti-rotation bracket provided for stability
- Selectable direction of rotation by reversing actuator
- 2 SPDT Fixed auxiliary switches as Standard
- Energy saving at end stops
- Actuators with 1m cable connection
- Thermal Sensor when requested
- Customised version available on request

Model Selection Table

Torque	Running Time	Power Supply	Auxiliary Switches	Model/Type	Thermal Sensor
8 Nm	75...95 sec	AC/DC 24V	2 x SPDT	SAFA 1-08S	No
	Spring Back <25 sec			SAFA 1-08ST	Yes
8 Nm	75...95 sec	AC 230V ±10%	2 x SPDT	SAFA 2-08S	No
	Spring Back <25 sec			SAFA 2-08ST	Yes

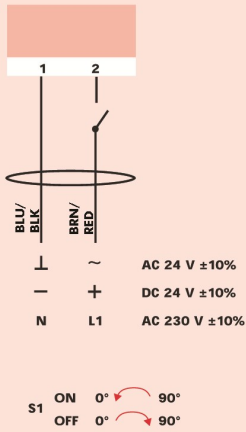
Actuator Dimensions (mm)



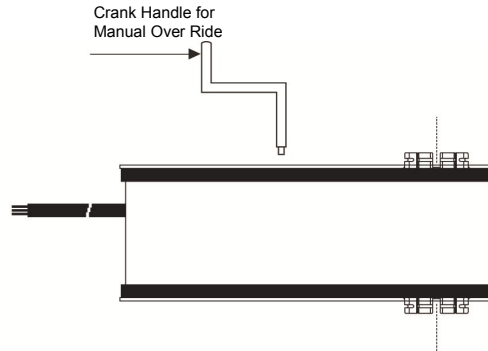
Technical Specification

	SAFA 1-08 (T)	SAFA 2-08 (T)
Torque — Motor (Rated Voltage) — Spring		Min. 8 Nm Min. 8 Nm
Damper Size		1.5 m ²
Power Supply	AC/DC 24 V	AC 230 V ±10%
Frequency		50..60Hz
Power Consumption		
-Operating	2.0 W	5.5 W
-At the end stops	10.0 VA	10.0 VA
For wire sizing		10.0 VA
Auxiliary Switches Rating (Amp and Voltage)	3 (1.5) A / 230 V (for 24 V and 230 V)	
Protection Class	II (for 24 V and 230 V)	
Controls Signal	2 Point On/Off	
Angle of Rotation	90° (95° mechanical)	
Thermal Temperature Trip	>72° Celsius	
Weight	2.2 Kg	2.3 Kg
Life Cycle	60,000 rotation	
Sound Level	Max. 45 dB (A)	
IP Protection	IP54	
Ambient Temperature	-20°...+50°C / IEC 721-3-3	
Inventory Temperature	-30°...+60°C / IEC 721-3-2	
Ambient Humidity	5...95% rH non condensing	
Maintenance	Maintenance free	
Certification	CE and ISO 9000 EN / EEC... Requirements	

Wiring Diagram NAFA..08

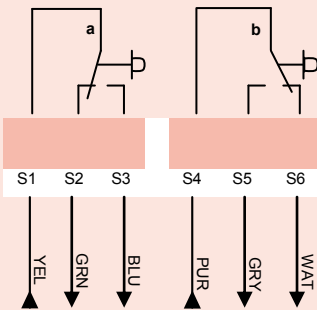


Changing Direction of Rotation SAFA...05(T)



⚠ AC/DC 24V: Connect via safety isolating transformer.
 AC 230V: To isolate from the main power supply, the system must incorporate a device which disconnects the phase conductors (with a least a 3 mm contact gap)

Auxillary switches (S)



Auxiliary Switches SAFA...08 (T)

Auxiliary are fixed at 5° for switch (a) and 85° for switch (b)
 Auxiliary Switches are Non adjustable.

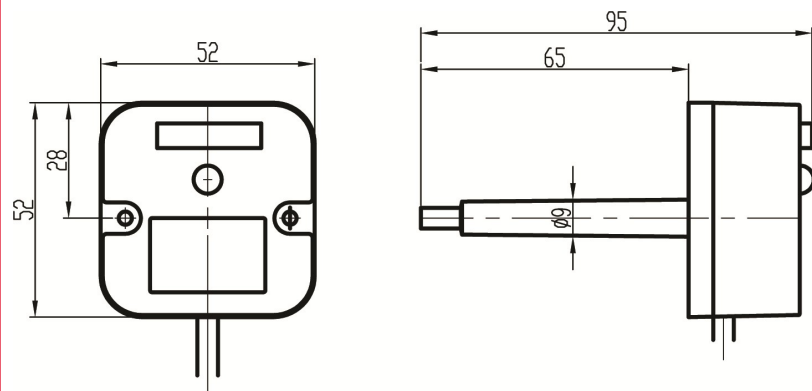
Thermal Sensor NTS 72

Thermal Sensor NTS 72 consist of both Ambient (TS1) and Duct sensor (TS2).

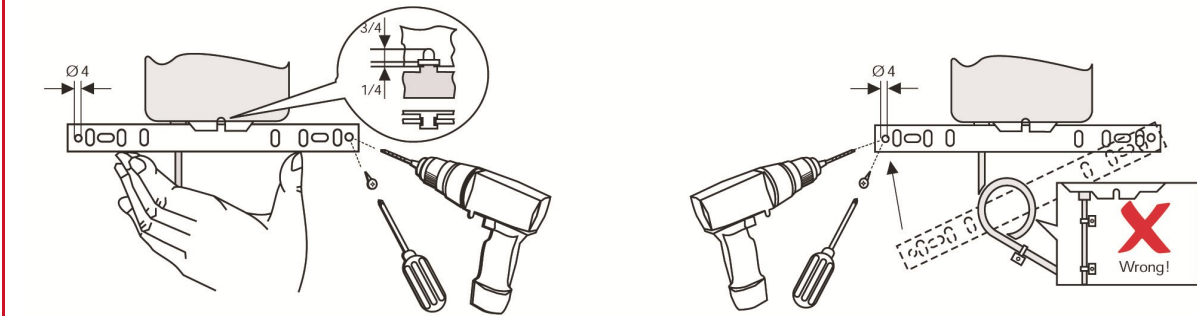
TS1 will trip open when the ambient temperature rise above 72°.

TS2 will trip open when the duct temperature rise above 72°.

Thermal Sensor NTS72



Installation / Mounting Instruction



OEM Customised Version on Request

TELIMA/NENUTEC offers you actuators in customised versions, e.g. with your own brand name, with colour-coordinated applications and with your particular demand. Please contact us for further information.

Important Remark

Consult NENUTEC representatives for specific requirements and material selections for your intended application.



This actuator includes electrical and electronic components and may not be disposed as household garbage. Please consider the local valid legislation.



AC / DC 24 V: Connect via safety isolating transformer.
 AC 230 V: To isolate from the main power supply, the system must incorporate a device which disconnects the phase conductor (with at least a 3 mm contact gap).

Main Office :

NENUTEC®

NENUTEC ASIA PACIFIC PTE LTD

7030 Ang Mo Kio Ave 5 #08-55

Northstar@AMK

Singapore 569 880

Phone : +65 6570 3233

Fax : +65 6570 6783

Email : info@nenutec.com.sg

Website : www.nenutec.com.sg

Headquarter:



TELIMA AG

Schachenstrasse 80

CH-8645 Jona / Switzerland

Phone : +41 55 212 40 60

Fax : +41 55 212 40 69

Email : info@telima.ch

Website : www.nenutec.com