

## NACM ...40 Nm Damper Actuator Modulating Control



- NENUTEC is proud to offer the 40 Nm damper actuator of the NACM... 40 (S) Series designed specifically application into the HVAC market.
- NENUTEC high quality damper actuators have been developed to operate and position air dampers of different sizes.

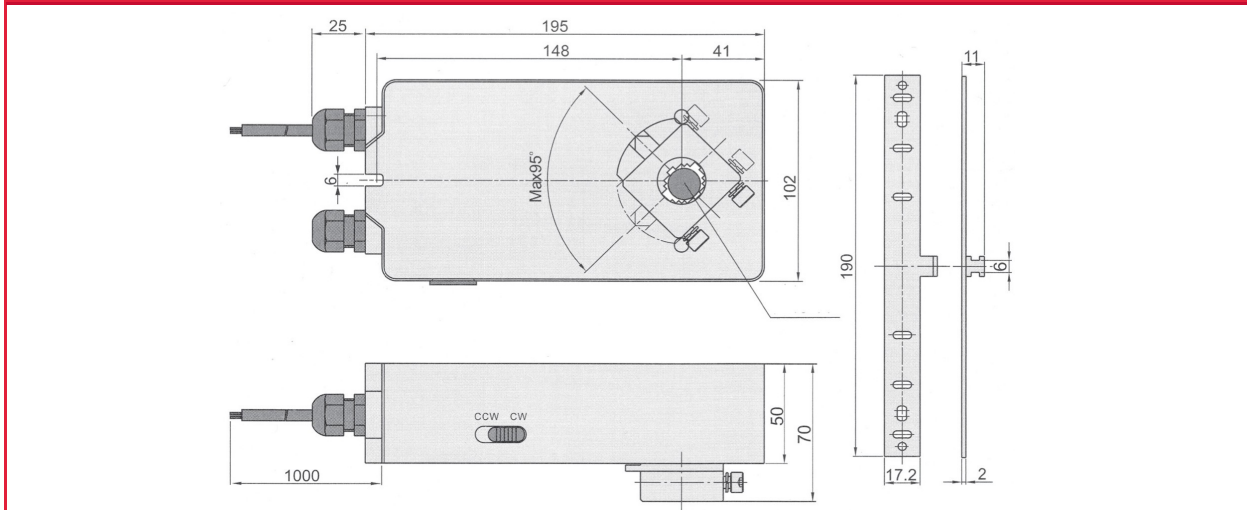
### Product Features

- For Air control dampers up to approx. 7.0m<sup>2</sup>
- 0(2)...10VDC and 0(4)...20 mA control
- Torque 40 Nm
- Nominal Voltage AC/DC 24V and AC 230V
- 2 Adjustable SDPT Auxiliary switches
- Shaft dimensions:  
Ø 12 to 20 mm round / □ 12 to 20 mm square
- Minimum shaft length 45 mm
- Selectable Direction of rotation CW/CCW
- Adjustable angle of rotation
- Actuator with 1m cable connection
- Customer version on request

### Model Selection Table

Torque	Running Time	Power Supply	Auxiliary Switches	Model/Type
40 Nm	80..150 sec	AC/DC 24V ±10%	No	NACM 1-40
			2 x SPDT	NACM 1-40S
40Nm	80..150 sec	AC 230V ±10%	No	NACM 2-40
			2 x SPDT	NACM 2-40S

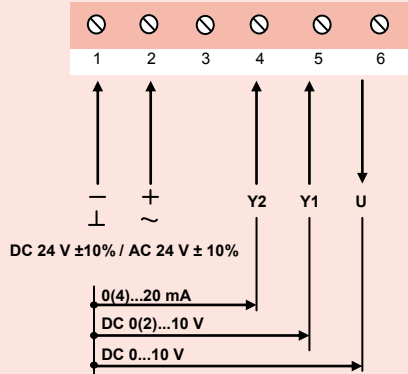
## Actuator Dimensions (mm)



## Technical Specification

	NACM 1...40 (S)	NACM 2...40 (S)
Torque		40 Nm
Damper Size		7.0 m <sup>2</sup>
Power Supply	AC/DC 24 V	AC 230V ±10%
Frequency		50...60Hz
Power Consumption		
-Operating		5 ... 8 VA
-At the end stops		1.0 ... 2.5 VA
For wire sizing		8.0 VA
Auxiliary Switches Rating (Amp and Voltage)	3 (1.5) A / 250 V (for 24 V and 250 V)	
Protection Class	II	II
Controls Signal Y1		0(2)...10 VDC
Controls Signal Y2		0(4)...20 mA
Controls Signal U		0(2)...10 VDC
Angle of Rotation		0° ... 90° (95° mechanical)
Weight		2.0 Kg
Life Cycle		60,000 rotation
Sound Level		40 dB (A)
IP Protection		IP54
Operating Temperature	-20° ... 50° C as per IEC 721-3-3	
Non-Operating Temperature	-30° ... 60° C as per IEC 721-3-2	
Ambient Humidity	5...95% rH non condensing / EN 60730-1	
Maintenance	Maintenance free	
Mode of Operation	Type 1 / EN60730-1	
EMC	CE according to 89 / 336 EEC	

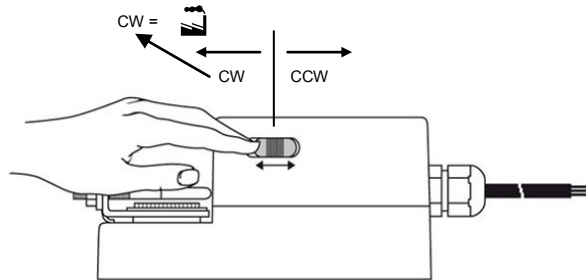
**Wiring Diagram NACM1.1....(S)**  
**Power Supply AC/DC 24V**



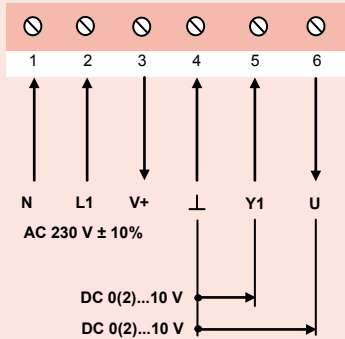
**Changing Direction of Rotation NACA 1/2...(S1)**

Factory-set CW!

The direction of rotation can be changed by pushing the CW/CCW switch on the actuator's housing.



**Wiring Diagram NACM2.2....(S)**  
**Power Supply AC 230V**

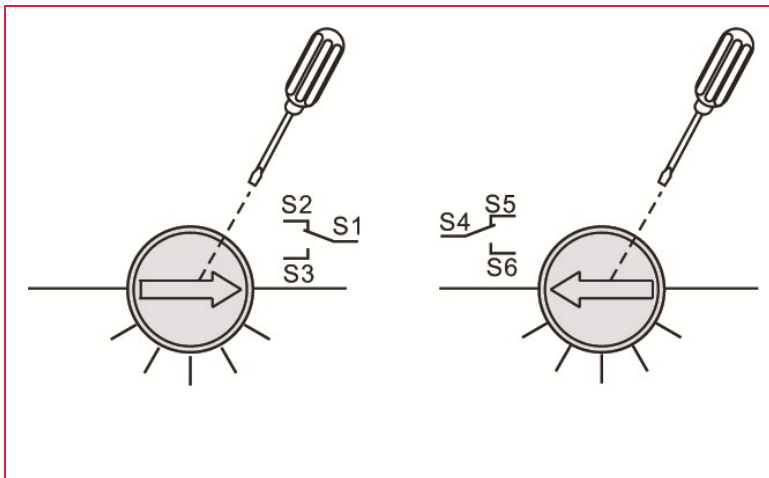
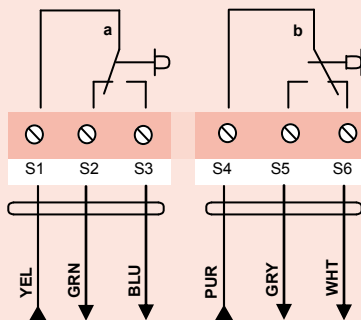


**Adjusting control signals NACM1.1... (S)**

Control Signal5 DC 0...10V  
 Input Resistance Ri 100 k Ohm  
**Factory default setting**

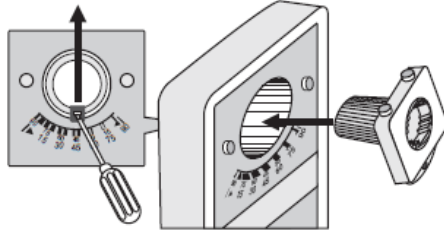
Control Signal 5 DC 2...10V  
 Input Resistance Ri 500 Ohm  
**On Request**

**Auxillary Switches**

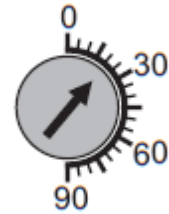


## Adjusting the Limits for Rotation

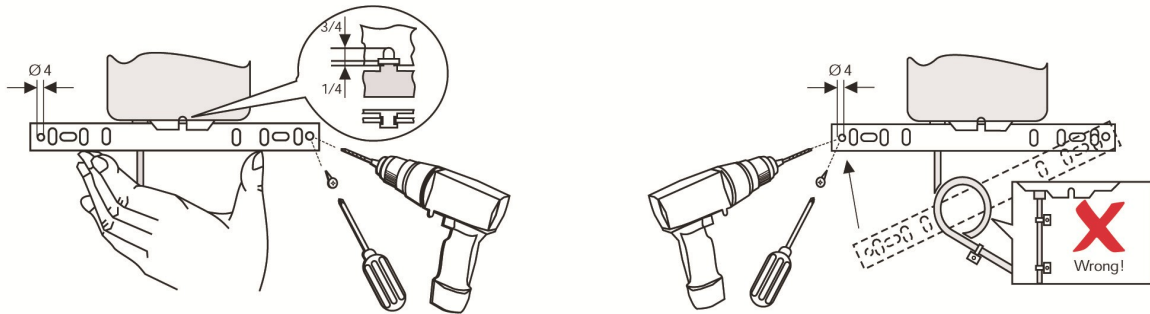
Removing the Spindle Connector



Adjustment can be done using a screw driver



## Installation / Mounting Instruction



## OEM Customised Version on Request

TELIMA/NENUTEC offers you actuators in customised versions, e.g. with your own brand name, with colour-coordinated applications and with your particular demand. Please contact us for further information.

## Important Remark

Consult NENUTEC representatives for specific requirements and material selections for your intended application.



This actuator includes electrical and electronic components and may not be disposed as household garbage. Please consider the local valid legislation.



AC / DC 24 V: Connect via safety isolating transformer.  
 AC 230 V: To isolate from the main power supply, the system must incorporate a device which disconnects the phase conductor (with at least a 3 mm contact gap).

### Main Office :



**NENUTEC ASIA PACIFIC PTE LTD**  
 7030 Ang Mo Kio Ave 5 #08-55  
 Northstar@AMK  
 Singapore 569 880  
 Phone : +65 6570 3233  
 Fax : +65 6570 6783  
 Email : info@nenutec.com.sg  
 Website : www.nenutec.com.sg

### Headquarter:



**TELIMA AG**  
 Schachenstrasse 80  
 CH-8645 Jona / Switzerland  
 Phone : +41 55 212 40 60  
 Fax : +41 55 212 40 69  
 Email : info@telima.ch  
 Website : www.nenutec.com