

# NEBA SERIES BALL VALVE ELECTRONIC RETURN ACTUATOR


2 Point Control 5 Nm


# NENUTE<sup>®</sup> C

INNOVATIVE MEMBER OF SWIS<sup>+</sup>TEC

**NENUTE<sup>®</sup> ASIA PACIFIC PTE LTD**  
7030 Ang Mo Kio Ave 5  
#03-56 Northstar @ AMK  
Singapore 569 880



 (65) 6570 3233

 (65) 6570 6783

 [info@nenutec.com.sg](mailto:info@nenutec.com.sg)

# NEBA SERIES BALL VALVE ELECTRONIC RETURN ACTUATOR

2 Point Control  
5 Nm



**High Neck  
Ball Valve Actuator**



**Low Neck  
Ball Valve Actuator**

## NEBA...05 SERIES

NEBA series electronic return valve actuators are especially designed and produced for applications in the HVAC systems. Our wide range of standard valve actuators has been developed to operate and position ball valves of different sizes.

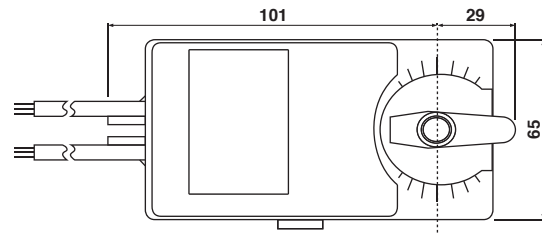
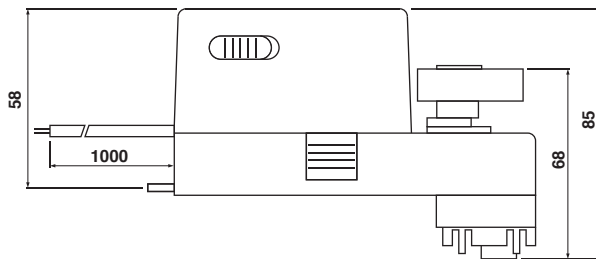
## PRODUCT FEATURE

- Torque 5 Nm
- Valve size DN15(1/2") / DN20(3/4") / DN25(1") / DN32(1 1/4")
- Power supply AC/DC 24 V and AC 230 V
- Shaft dimensions - □ 9.0 mm (fixed)
- Selectable direction of rotation of reversing actuator
- Actuator with 1 m cable connection
- Available in high neck and low neck

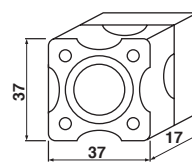
## MODEL SELECTION TABLE

MODEL /TYPE	TORQUE	POWER SUPPLY	RUNNING TIME	RETURN	AUXILIARY SWITCH
NEBA 1-05 LN	5 Nm	AC/DC 24V ± 10%	50...55 sec	20 sec	-
NEBA 1-05S LN	5 Nm	AC/DC 24V ± 10%	50...55 sec	20 sec	2 x SPDT (Adjustable)
NEBA 1-05 HN	5 Nm	AC/DC 24V ± 10%	50...55 sec	20 sec	-
NEBA 1-05S HN	5 Nm	AC/DC 24V ± 10%	50...55 sec	20 sec	2 x SPDT (Adjustable)
NEBA 2-05 LN	5 Nm	AC 230V ± 10%	50...55 sec	20 sec	-
NEBA 2-05S LN	5 Nm	AC 230V ± 10%	50...55 sec	20 sec	2 x SPDT (Adjustable)
NEBA 2-05 HN	5 Nm	AC 230V ± 10%	50...55 sec	20 sec	-
NEBA 2-05S HN	5 Nm	AC 230V ± 10%	50...55 sec	20 sec	2 x SPDT (Adjustable)

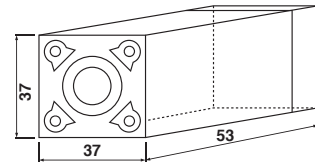
## DIMENSION (mm)



For Low Neck:



For High Neck:



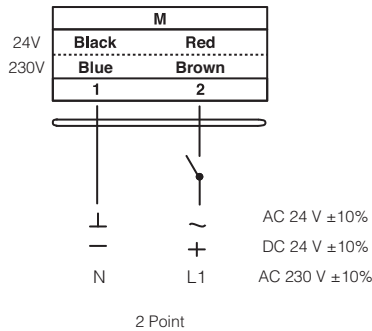
## TECHNICAL SPECIFICATION

MODEL NUMBER	NEBA 1-05	NEBA 2-05
TORQUE	5 Nm	5 Nm
VALVE SIZE	DN15(1/2") / DN20(3/4") / DN25(1") / DN32(1 1/4")	DN15(1/2") / DN20(3/4") / DN25(1") / DN32(1 1/4")
SHAFT DIMENSION	□ 9.0 mm (fixed)	□ 9.0 mm (fixed)
POWER SUPPLY	AC/DC 24 V ± 10%	AC 230 V ± 10%
FREQUENCY	50...60 Hz	50...60 Hz
CONTROL SIGNAL	2 point control	2 point control
POWER CONSUMPTION		
● OPERATING	8.7 W	8.7 W
● END POSITION	1.2 W	1.2 W
FOR WIRE SIZING	14.0 VA	14.0 VA
ELECTRICAL CONNECTION	1 m Cable	1 m Cable
AUXILIARY SWITCH RATING	3 (1.5) A, AC 250 V	3 (1.5) A, AC 250 V
PROTECTION CLASS	Class III ⚡	Class II ⚡
ANGLE OF ROTATION	90° (95° mechanical)	90° (95° mechanical)
WEIGHT	< 0.8 Kg	< 0.8 Kg
LIFE CYCLE	60,000 Rotation	60,000 Rotation
SOUND LEVEL	40 dB	40 dB
IP PROTECTION	IP54	IP54
OPERATING TEMPERATURE	-20°...50° as per IEC 721-3-3	-20°...50° as per IEC 721-3-3
NON-OPERATING TEMPERATURE	-30°...+60° C / IEC 721-3-2	-30°...+60° C / IEC 721-3-2
AMBIENT HUMIDITY	5%...95% rH non condensing / EN	5%...95% rH non condensing / EN
MAINTENANCE	Maintenance Free	Maintenance Free
MODE OF OPERATION	Type I / EN 60730-1	Type I / EN 60730-1
EMC	CE & ISO 9000 EN / EEC	CE & ISO 9000 EN / EEC

# NEBA SERIES BALL VALVE ELECTRONIC RETURN ACTUATOR

2 Point Control  
5 Nm

## WIRING DIAGRAM NEBA...05 POWER SUPPLY AC/DC 24 V / AC 230V

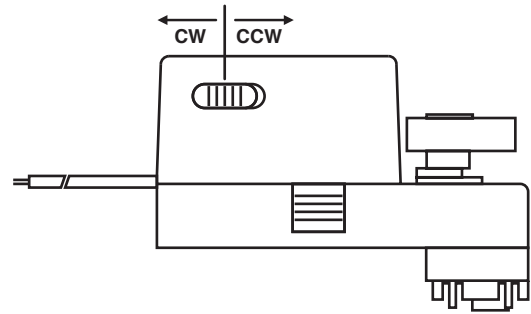


⚠ Connect via safety isolating transformer

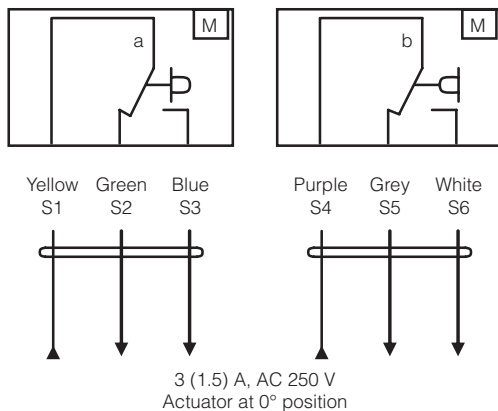
## DIRECTION OF ROTATION NEBA...05

Default factory setting: CCW.

Direction of rotation can be change by toggling between CW/CCW switch on the actuator's housing.



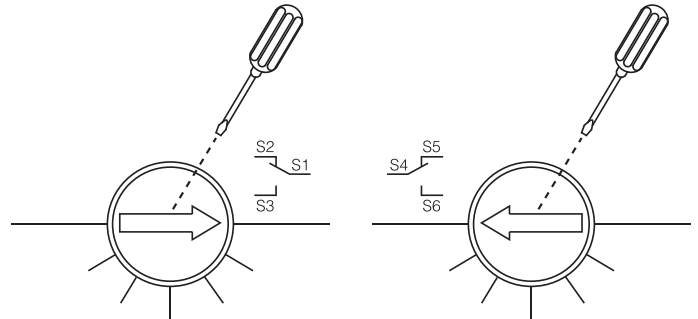
## WIRING DIAGRAM NEBA...05 AUXILIARY SWITCH



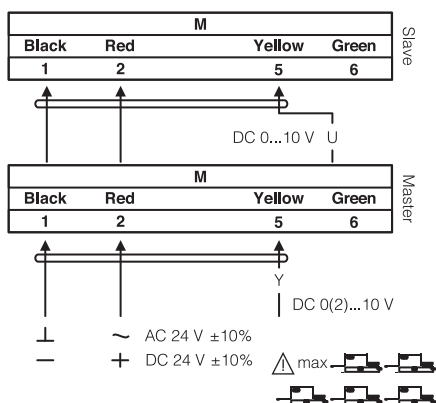
## AUXILIARY SWITCH NEBA...05

Switch **a** factory-set at 5° and 85°.

The auxiliary switch can be optimally adjusted between 0°...90°.

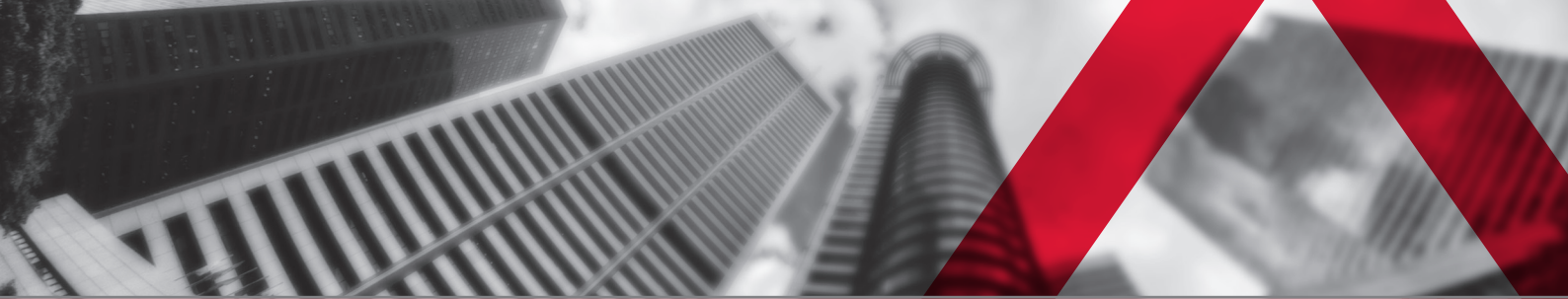


## WIRING DIAGRAM NEBA...05 PARALLEL CONNECTION



## REMARK

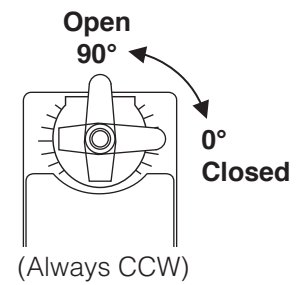
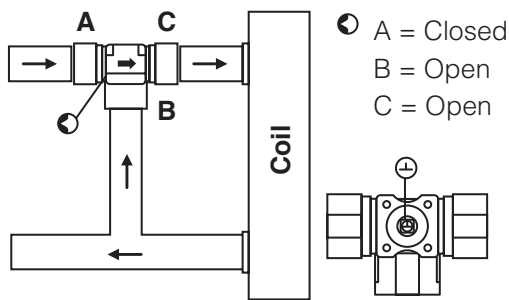
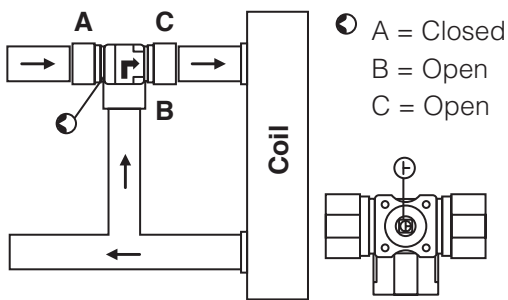
Parallel connection of NEBA...05 actuators are limited to 5. Power consumption must be observe.



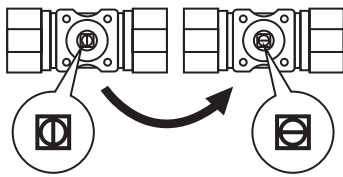
### MIXING CLOSED

### MIXING OPEN

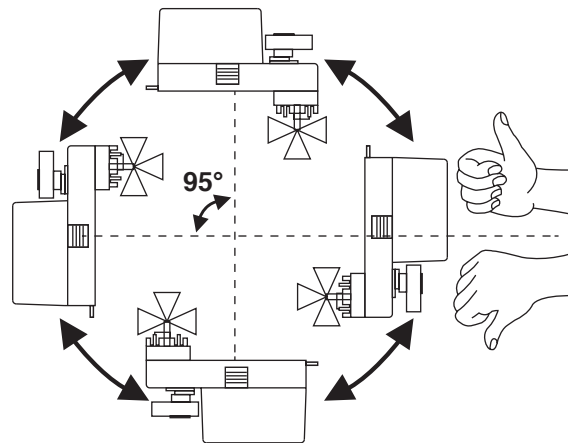
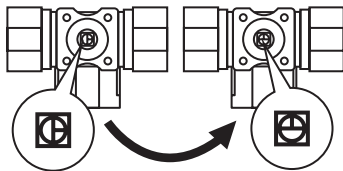
### ACTUATOR POSITION



#### 2-way Closed 2-way Open



#### 3-way Closed 3-way Open



## IMPORTANT REMARK

For special requirement, consult your local Nenutec's representative.

This actuator includes electrical and electronic components and may not be disposed as household garbage. Please consider the local valid legislation.

AC / DC 24 V: Connect via safety isolating transformer.  
 AC 230 V: To isolate from the main power supply, the system must incorporate a device which disconnects the phase conductor (with at least a 3mm contact gap.)

The performance specifications are nominal and conform to acceptable industry standards. NENUTEC shall not be liable for damages resulting from misapplication or misuse of its products.