

NEBM...05 SERIES

VALVE AND VALVE ACTUATOR MODULATING CONTROL



High Neck
Ball Valve Actuator



Low Neck
Ball Valve Actuator

NEBM...05 SERIES

NEBM series electronic return valve actuators are especially designed and produced for applications in the HVAC systems. Our wide range of standard valve actuators has been developed to operate and position ball valves of different sizes.

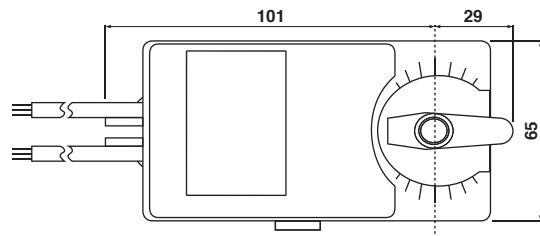
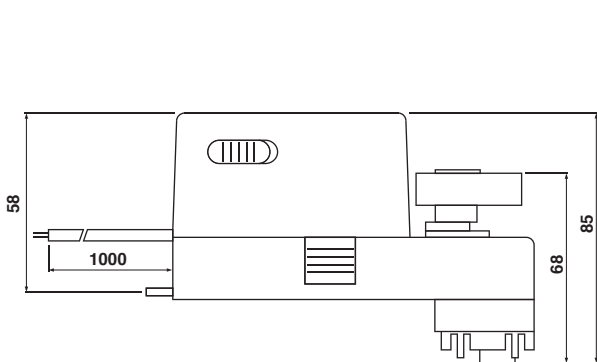
PRODUCT FEATURE

- Torque 5 Nm
- Valve size DN15(1/2") / DN20(3/4") / DN25(1") / DN32(1 1/4")
- Power supply AC/DC 24V
- Control modulating DC 0(2)...10 V
- Shaft dimensions - □ 9.0 mm (fixed)
- Selectable direction of rotation of reversing actuator
- Available in high neck and low neck

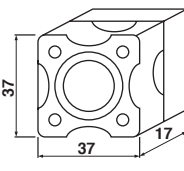
MODEL SELECTION TABLE

MODEL / TYPE	TORQUE	POWER SUPPLY	RUNNING TIME	RETURN	AUXILIARY SWITCH
NEBM 1.2-05 LN	5 Nm	AC/DC 24 V ± 10%	50...55 sec	20 sec	-
NEBM 1.2-05 HN	5 Nm	AC/DC 24 V ± 10%	50...55 sec	20 sec	-

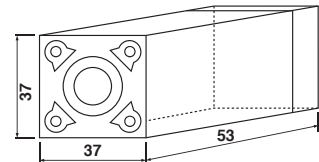
DIMENSION (mm)



For Low Neck:



For High Neck:



TECHNICAL SPECIFICATION

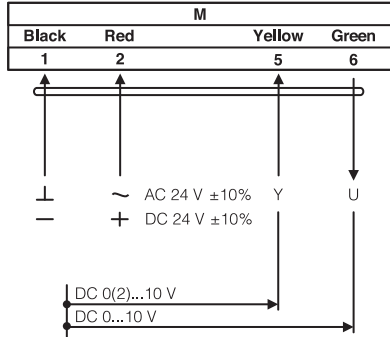
MODEL NUMBER	NEBM 1.2-05
TORQUE	5 Nm
DAMPER SIZE	DN15(½") / DN20(¾") / DN25(1") / DN32(1¼")
SHAFT DIMENSION	□ 9.0 mm (fixed)*
POWER SUPPLY	AC/DC 24 V ± 10%
FREQUENCY	50...60 Hz
CONTROL SIGNAL (INPUT)	DC 0(2)...10 V
CONTROL SIGNAL (OUTPUT)	DC 0...10 V
POWER CONSUMPTION	
• OPERATING	2.0 W
• END POSITION	3.0 W
FOR WIRE SIZING	6.0 VA
ELECTRICAL CONNECTION	1 m Cable
PROTECTION CLASS	Class III ⚡
ANGLE OF ROTATION	90° (95° mechanical)
WEIGHT	0.55 Kg
LIFE CYCLE	60,000 Rotation
SOUND LEVEL	40 dB
IP PROTECTION	IP54
OPERATING TEMPERATURE	-20°...50° as per IEC 721-3-3
NON-OPERATING TEMPERATURE	-30°...+60° C / IEC 721-3-2
AMBIENT HUMIDITY	5%...95% rH non condensing / EN
MAINTENANCE	Maintenance Free
MODE OF OPERATION	Type I / EN 60730-1
EMC	CE & ISO 9000 EN / EEC

*Note that shaft dimension has a tolerance offset of ± 0.2mm.

NEBM...05 SERIES

VALVE AND VALVE ACTUATOR MODULATING CONTROL

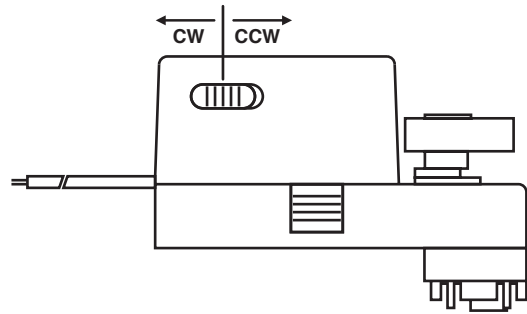
WIRING DIAGRAM NEBM...05 POWER SUPPLY AC/DC 24V



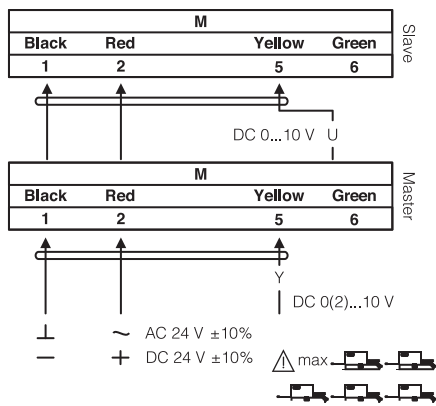
DIRECTION OF ROTATION NEBM...05

Default factory setting: CCW.

Direction of rotation can be changed by toggling between CW/CCW switch on the actuator's housing.



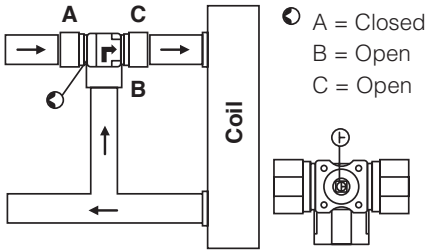
WIRING DIAGRAM NEBM...05 PARALLEL CONNECTION



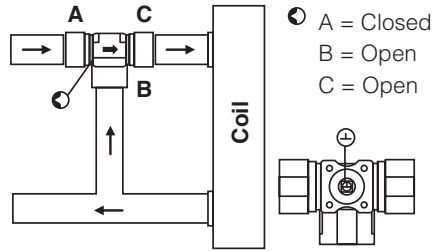
REMARK

During parallel operation, the output signal (terminal 6, DC 0...10 V) of the master actuator must be connected to terminal 5 of the next slave actuator.

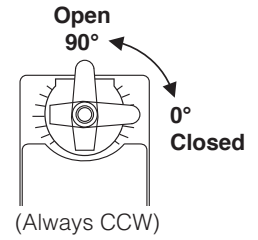
MIXING CLOSED



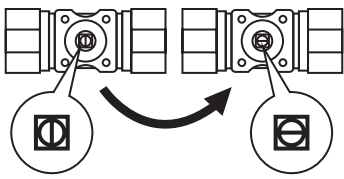
MIXING OPEN



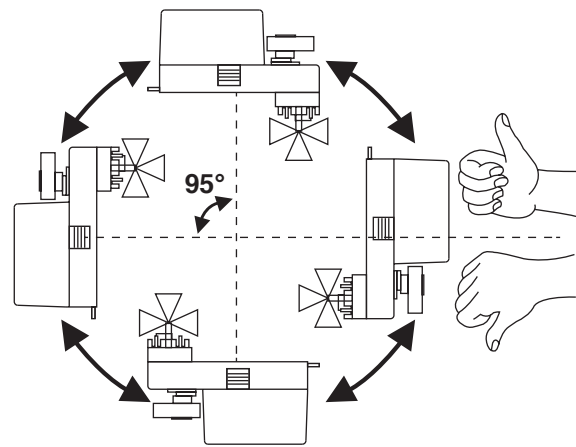
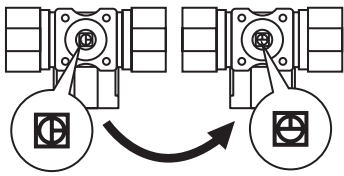
ACTUATOR POSITION



2-way Closed 2-way Open



3-way Closed 3-way Open



IMPORTANT REMARK

For special requirement, consult your local Nenutec's representative.



This actuator includes electrical and electronic components and may not be disposed as household garbage. Please consider the local valid legislation.



AC / DC 24 V: Connect via safety isolating transformer.
 AC 230 V: To isolate from the main power supply, the system must incorporate a device which disconnects the phase conductor (with at least a 3mm contact gap.)

The performance specifications are nominal and conform to acceptable industry standards. NENUTEC shall not be liable for damages resulting from misapplication or misuse of its products.